

65E / Motor Grader TURBO



82 kW (110 HP)
7615 kg
3050 mm or 3660 mm BLADE

Pictured with optional equipment

Compact Grader With Big Grader Features

1339 mm Circle With "A" Frame Drawbar
Full Power Shift Transmission With Torque Converter
Torque Proportioning Rear Differential

Built From A Lineage Of Market Leaders For Over 50 Years



65E / Motor Grader TURBO



BIG GRADER FEATURES IN A SMALL PACKAGE

Operating Weight

- Front 2139 kg
- Rear 5475 kg
- Total 7614 kg

Engine

- Make/Model Cummins QSB4.5
- Type 4 Cycle, turbo diesel
- No. of cylinders 4
- Displacement 4.5 liters
- Horsepower 82 kW (110 HP)
- Rated speed 2,200 rpm

Brakes

- Service – 4 wheel, wet disc & self adjusting
- Independent tandem by tandem system
- Mechanical parking brake

Axles

- Front axle clearance – 516 mm
- Rear axle – torque proportioning differential

Transmission

- Full power shift with torque converter
- 6 speeds forward – top speed 38.4 km/h
- Electronic shift control
- LCD message center
- Shift inhibit system

Circle

- 1339 mm diameter gear driven circle
- Supported on 4 guides with wear plates
- Shim adjustable
- 360° rotation
- Hydraulic circle side shift

Moldboard/Blade

- “Rollaway” blade with end bits
- Replaceable cutting edges
- Size – 3050 x 422 x 16 mm
- Lift above ground – 391 mm
- Maximum penetration – 508 mm



Full power shift transmission with torque converter



1339 mm gear driven circle with “A” frame allows 360° blade rotation

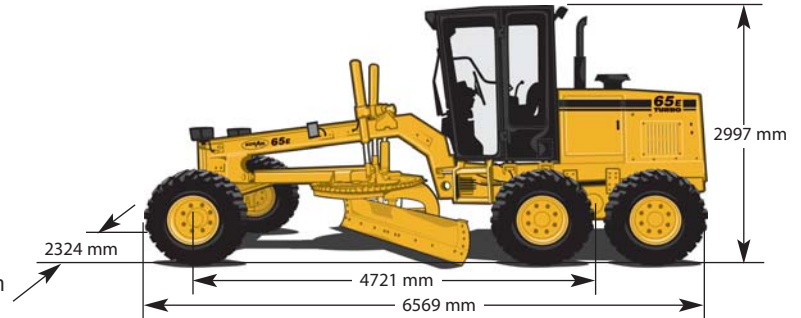


Illustration includes optional equipment

STANDARD EQUIPMENT

- Accelerator/decelerator and hand throttle
- Alternator – 100 Amp.
- Articulated frame
- Back-up alarm
- Batteries (2) – 12 volt
- Controls, hydraulic
 - Articulation
 - Circle side shift
 - Circle turn
 - Moldboard lift/lower
 - Moldboard side shift
 - Wheel lean
- Control console, adjustable
- Drawbar
- Engine side panels
- Gauges
 - Air cleaner service indicator
 - Engine coolant temperature
 - Engine oil pressure
 - Fuel level
 - Hourmeter
 - Transmission LCD message center
 - Transmission oil temperature
 - Voltmeter
- Horn, electric
- Implement control lever lock
- Light package
 - Front headlights (2) – hi/lo beam
 - Front worklights (2)
 - Turn signals, stop and tail lights
- Master electrical switch
- Mechanical parking brake
- Muffler, horizontal under hood
- Moldboard – 3050 mm wide
- Moldboard pitch, manual
- ROPS Canopy with
 - Dome light
 - Floormat
 - Glove box
 - Grab handles
 - Headliner
 - Inside mirror
 - Seat belt
- Seat, vinyl – deluxe air suspension
- Steps, right and left
- Tires – 15.00 x 19.5 (8PR) G2 tubeless
- Valve eight station
- Vandalism protection

OPTIONAL EQUIPMENT

- Cab, includes
 - Cloth seat – air suspension
 - Defroster fans (2)
 - F & R wipers/washers
 - Heater, 40,000 BTU
 - Inside mirror
 - Sliding rear window
 - Sound suppression
 - Tinted glass
- Cold weather starting aid (ether)
- Dozer – 2438 x 610 mm, with skid plates
- Factory air conditioner
- Float control valves, (3)
- Floodlights, (2) F & (2) R
- Mirrors, rearview – external, (2)
- Moldboard – 3660 mm wide
- Moldboard extensions
- Moldboard pitch, hydraulic
- Rear ripper – 1905 mm wide, 3 shanks
- Scarifier – 794 mm wide, 9 teeth
- Strobe light
- 90° bank slope saddle



Deluxe cab



Scarifier



Dozer blade



90° Bank slope saddle



NorAm Construction Equipment
1250 W. Northwest Hwy., # 504
Palatine, Illinois 60067 U.S.A.
1-847-934-6565

The information contained in this brochure is intended to be of general nature only. The manufacturer may at any time and from time to time, for technical or other necessary reasons, modify any of the details or specifications of the product described in this brochure. Illustrations do not necessarily show products in standard condition. The dimensions, weights and capacities shown herein, as well as any conversion data used, are approximate only and are subject to variations within normal manufacturing techniques. To be sure of getting accurate, detailed and up-to-date information, any intending buyer should contact NorAm.